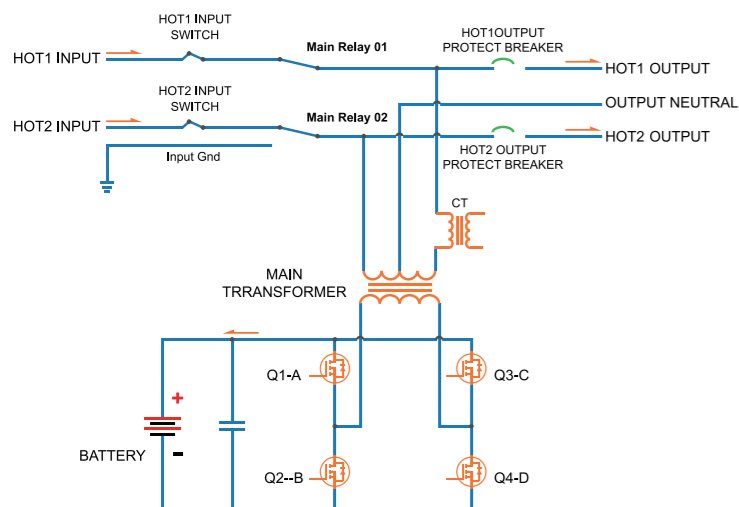


GSII 4-6KW Solar Hybrid Inverter Split phase inverter

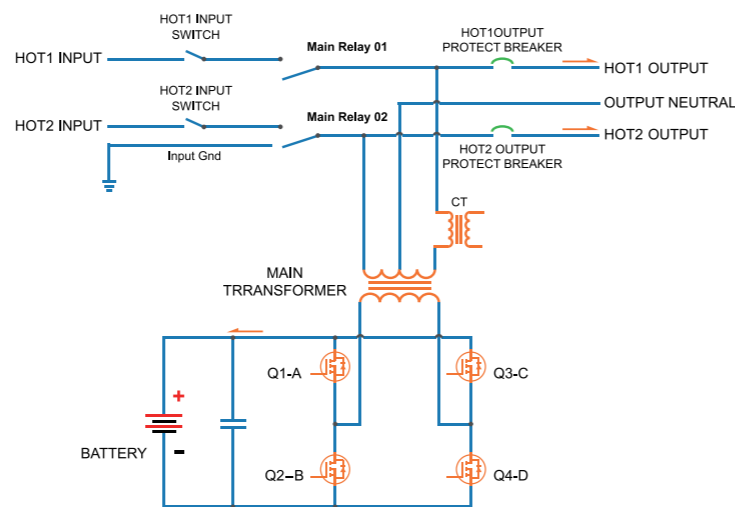


100% Pure Copper Transformer

split phase inverter schematics AC mode



split phase inverter schematics Battery Mode



TEXAS INSTRUMENTS

Specifications

MODEL	GSII4K-24-60A-SP	GSII5K-24-60A-SP	GSII6K-24-60A-SP	GSII4K-48-60A-SP	GSII5K-48-60A-SP	GSII6K-48-60A-SP
Rated Power	4000W	5000W	6000W	4000W	5000W	6000W
Surge Power	12KW	15KW	18KW	12KW	15KW	18KW
AC INPUT						
Input Voltage Waveform	Sinusoidal (utility or generator)					
Nominal Input Voltage	HOT1- HOT2 : 240VAC					
Input Voltage Range	Normal : 180-270VAC ; Wide : 140-270VAC					
Input Frequency Range	50Hz:46~56Hz ; 60Hz:56~67Hz;					
AC OUTPUT						
Power Factor	0.9~1.0					
Load connection method(Max)	HOT1- HOT2 : Full Load; or HOT1- N: Half load ; HOT2- N: Half load					
Nominal output Voltage	HOT1- HOT2 : 240VAC ; HOT1- N: 120VAC ; HOT2- N: 120VAC					
Nominal output Frequency	50/60Hz±0.3 (LCD Adjustable)					
Wave Form	Pure sine Wave					
Transfer time (Max)	15ms (DC to AC) ; 20ms (AC to DC)					
BATTERY						
Nominal Battery voltage	24.0VDC				48.0VDC	
Low Battery shut-down	20.0VDC				40.0VDC	
Floating Charging Voltage	27.4VDC				54.8VDC	
High-voltage protection	32.0VDC				64.0VDC	
Efficiency						
Efficiency (Battery mode)					≥87%	
Efficiency (Line mode)					>98%	
Solar Charger & AC Charger						
Solar Charger Type					MPPT	
PV Input Max Power	1750W				3500W	
PV operating voltage range	30-70V				60-145V	
Max. PV Voltage	75V				150V	
Max Solar Charging Current	60A	60A	60A	60A	60A	60A
Max AC Charging Current	70A	70A	70A	50A	50A	50A
PHYSICS						
Dimension L*W*H(mm)	572*441*205					
Net weight(kg)	34.8	36.8	39.8	34.8	36.8	39.8
Communications interface	RS232/Dry-contact					
Operating Humidity	5% to 95% Relative Humidity(non-condensing)					
Operating Temperature	-10~45 C					
Storage temperature	-15-60 C					
STANDARD						
Safety certification	CE /ETL					

Product specifications are subject to change without further notice.

